

Thank You

Thank you for ordering brackets from ExtendMySeat, the automotive solution for more leg-room, more comfort and better driving.

Inventory in Box:

- 3 - ExtendMySeat brackets
- 3 - 3/8 black bolts
- 1 - Stainless nut

What you will need for assembly:

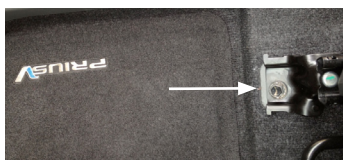
- 1 - Socket wrench
- 1 - Metric 14 socket
- 1 - Box knife

STEP 1

Remove the ExtendMySeat brackets from the package and locate the bolts and nut provided.

STEP 2

Locate the four factory bolts that hold your seat to the vehicle (two in the front and two behind your seat) You will need to remove the four rear plastic guards (twist clockwise) in order to locate the four factory bolts. Take your socket wrench and remove the four factory bolts and set them aside.

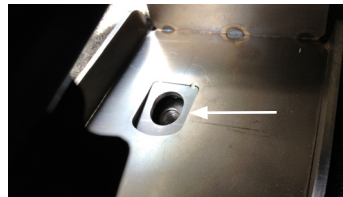


STEP 3

Take the largest ExtendMySeat bracket going on the door side parallel with the car. (Passenger side layout is flipped so the one long bracket is installed towards the outside of the car). There are etched arrows on the top of the brackets to show the correct direction of installation. Slightly tighten the outer rear factory hole with the factory bolt (closest to the outside of the car)



*Front of vehicle is to the left of the above photos



View of Rear Outer



View of Rear Outer

STEP 4

The two smaller pieces go towards the inside of the vehicle (nearest the transmission hump) with the smallest flat piece in the rear. The mid-sized bracket goes into the front inside location and the smallest piece will be installed into the rear inner location (by the transmission hump).

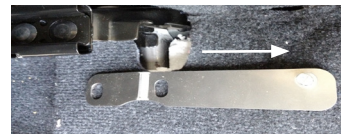


View of Front Inner

Go to the front seat and line up the front factory hole locations with both brackets and slightly tighten the factory bolts. Do not secure the factory seat to the brackets at this time.

STEP 5

The inner rear flat bracket will require a small incision of your floorboard carpet. You will need to cut a 5" straight line from the factory hole location towards the rear of the vehicle (see photo below).



You will also need to cut out 1" width of the foam under the carpet in order to make room for the extended seat. The carpet will be placed back over the small incision.



STEP 6

Insert the male threaded tab through the factory rear seat foot hole and tighten with the ExtendMySeat nut provided. The male end of the bolt will be facing the outside of the driver's side of the vehicle.

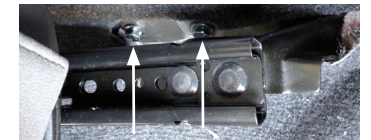


STEP 6B

You will see an additional black factory bolt like the below photo. You will need to remove this bolt and screw it back through the front hole location of the small bracket. The final "middle" hole will receive the last remaining factory bolt. Once you have both of the factory bolts secured, check to make sure the seat is level. If the seat is uneven, loosen the factory bolts, level seat and then re-tighten.

STEP 6B cont.

The below photo shows the 2 factory bolts secured.



STEP 7

This photo below is of the outer rear factory hole. Screw the ExtendMySeat bolt into this rear hole location.



STEP 8

Go to the front seat and slide the seat to the rear. You will now want to screw in the two remaining ExtendMySeat bolts and secure the factory seat.



STEP 9

Complete the installation by securing the eight bolts (four ExtendMySeat and four factory). Check to make sure all bolts are tight and secure.



STEP 10

Re-install factory plastic guards.

STEP 11

Test the seat by sliding it back and forth.
You are complete.

MORE INFORMATION

If you are installing the
passenger side, repeat the above
steps on the passenger side.

To view a video
on installation, please visit
[extendmyseat.com/
install-guides/](http://extendmyseat.com/install-guides/)

EXTENDMYSEAT.COM
3186-H Airway Avenue
Costa Mesa, California 92626