

EXTENDMYSEAT.com

MORE LEG-ROOM, MORE COMFORT, BETTER DRIVING

Honda Fit - Install Instructions

1. Remove all bolt caps front and rear



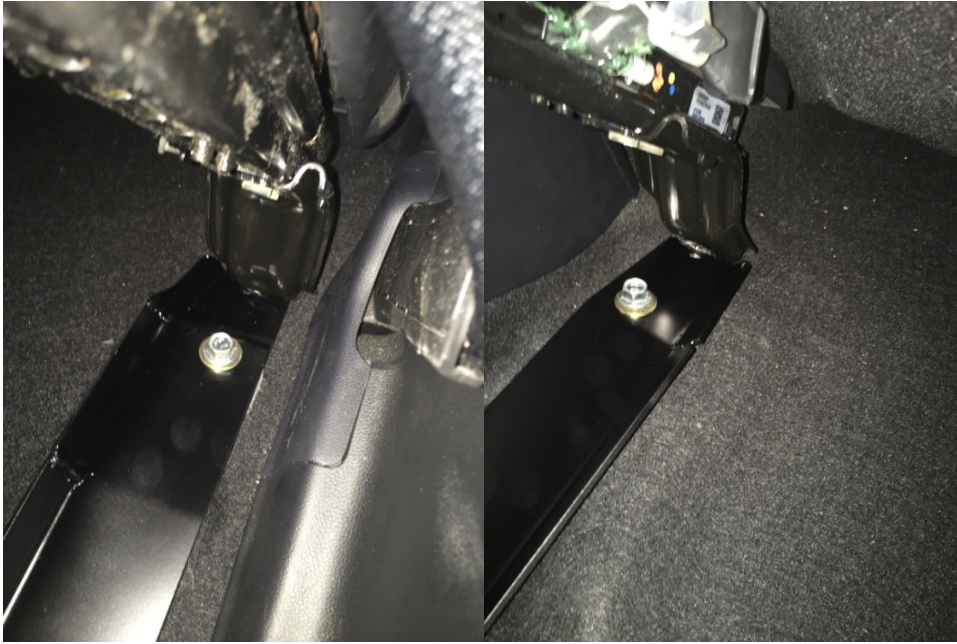
2. tilt seat back to unplug electrical plugs



3. Lay seat back and place brackets in their proper orientation, according to "I-INNER" and "O-OUTER"



4. Using the factory seat bolts, bolt brackets in place and tighten



5. Re-place seat on EMS brackets and thread 3/8-16 bolts into the seat track mounts, after all 4 are started in their threads, tighten all bolts.



6. Replace seat track covers and bolt covers

